

*The* **HIMALAYAN**  
 **DATABASE**

*The Expedition Archives of Elizabeth Hawley*

**Program Guide for  
Windows**

**Himal 2.5**

**Appendix L: Using the Himalayan Database with Wine  
(for the Mac)**

**Richard Salisbury**



**The Himalayan Database**

**June 2022**



# Contents

Appendix L: Using the Himalayan Database with Wine.....	4
Installing and Running the Database with Wine.....	4
Printing with Wine.....	6
Printing PDFs with Wine.....	7
Saving Excel Files with Wine.....	11
Updating the Database.....	14
Uninstalling the Database.....	18

## Appendix L: Using the Himalayan Database with Wine

**Wine** is an open-sourced software application that allows Microsoft Windows programs to run on Unix-based operating systems such as Linux, Solaris, and Macintosh OS X (10.6 and higher).

The Himalayan Database is compatible with Wine and Macintosh OS versions OS X 10.6 (Snow Leopard) through macOS 10.14 (Mojave). **Currently the Wine version of the Himalayan Database is not compatible with macOS 10.15 (Catalina) or later. It is unlikely that Wine will be further developed for later versions of the macOS.**

The Wine version of the Himalayan Database was created by using the freeware WineBottler application that is based on Wine.

CrossOver is a commercial product that is also based on Wine and also can be used to run the Himalayan Database (see Appendix K). **CrossOver is compatible with macOS 10.15 (Catalina), macOS 11 (Big Sur) and macOS 12 (Monterey) for Intel Macs.**

The primary advantage of using the WineBottler version is that it is very simple to install and use, and it is freeware. However, there is no support offered by the WineBottler vendor.

The primary advantage of using CrossOver is that other Windows applications can be installed and run in conjunction with the Himalayan Database such as Microsoft Excel for Windows, the Internet Explorer, or other proprietary programs. CodeWeavers, the CrossOver vendor, also offers extensive support for its customers.

Further information about using Wine can be found at the following links:

[http://en.wikipedia.org/wiki/Wine\\_\(software\)](http://en.wikipedia.org/wiki/Wine_(software))  
<https://www.winehq.org>  
<http://winebottler.kronenberg.org>

### Installing and Running the Database with Wine

Download the Himalayan Database Wine folder to your Mac from

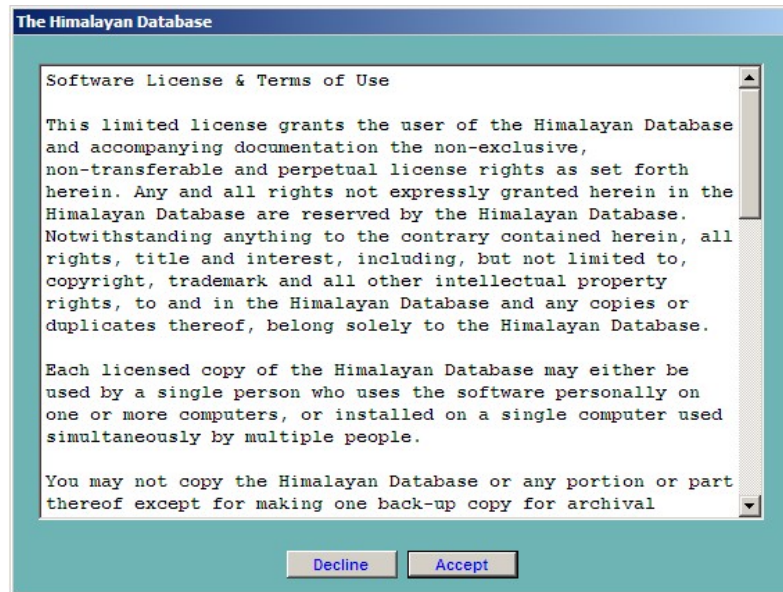
[www.himalayandatabase.com/himalwine.html](http://www.himalayandatabase.com/himalwine.html)

and move it to your Applications folder. If it is downloaded as a “.zip” or “.tar” archive folder, double click it to expand it.

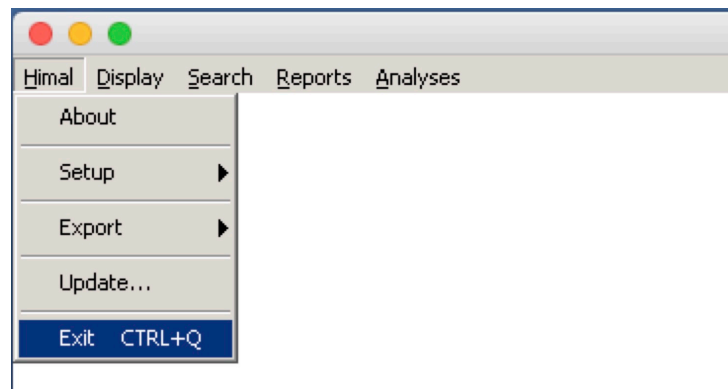
You may want to create a short-cut for the Himal application and place it on your desktop, or you may drag the application to your dock.

Launch the Himalayan Database by double-clicking the Himal application file within the Himalayan Database Wine folder. The first time you launch the Himal application, the program will initiate the Windows environment, which may take 10 to 20 seconds or more. Subsequent launches will be much quicker.

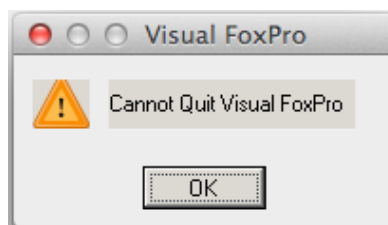
You will be asked to accept the software license and terms the first time you run the program.



When you want quit the Himalayan Database and exit Wine, first select the Exit command from the File menu in the Himalayan Database:



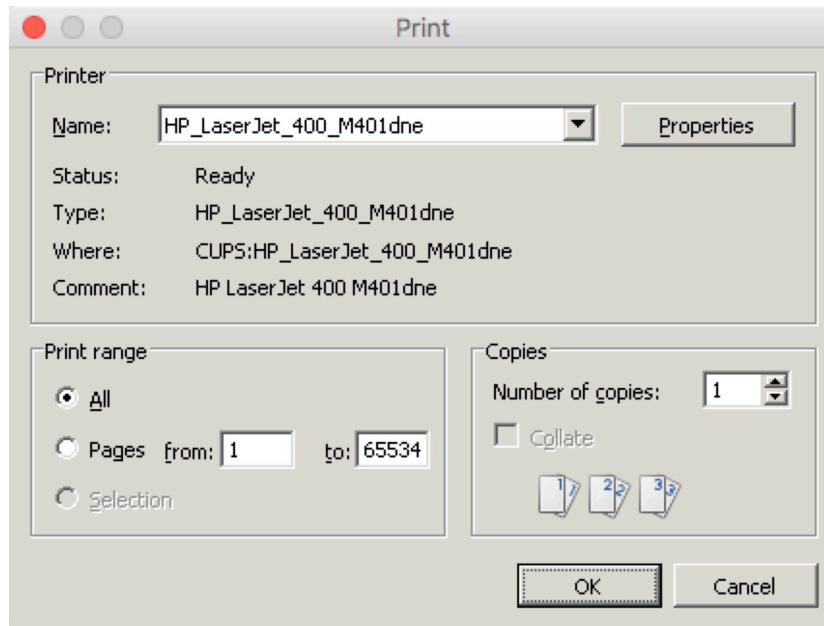
If you exit Wine directly without first exiting the Himalayan Database, you will get the following error message.



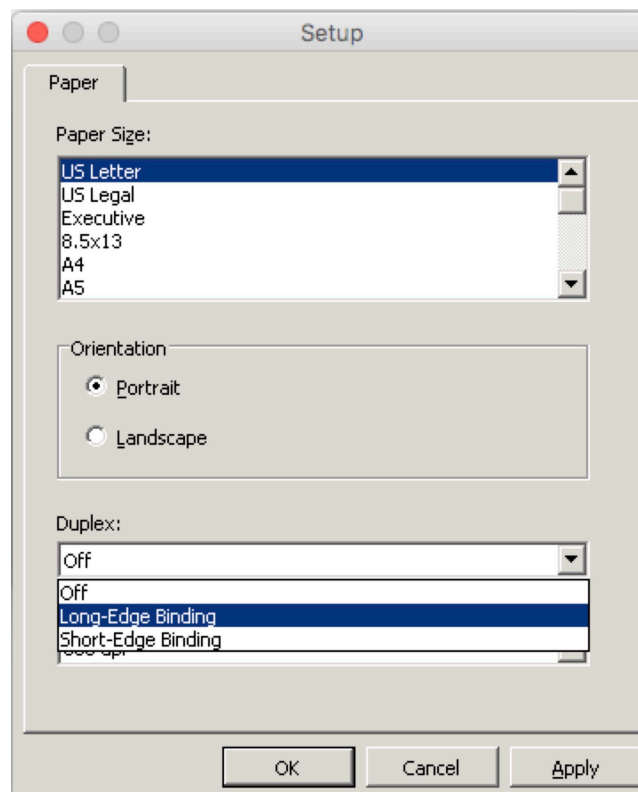
Click "OK" and then follow the correct sequence described above (you may have to click "OK" several times).

## Printing with Wine

Wine provides its own dialog box for printing from Windows programs.

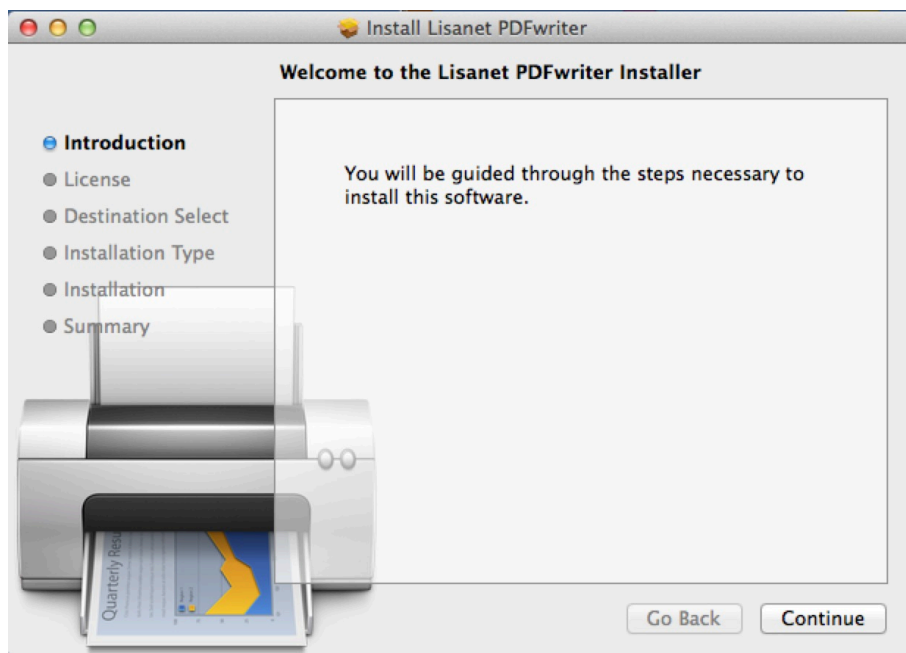


By default, the printed output will be one-sided. If you want double-sided output, click on the “Properties” button and then select either “Flip on Long Edge” or “Flip on Short Edge” depending on whether you are printing in Portrait or Landscape mode.

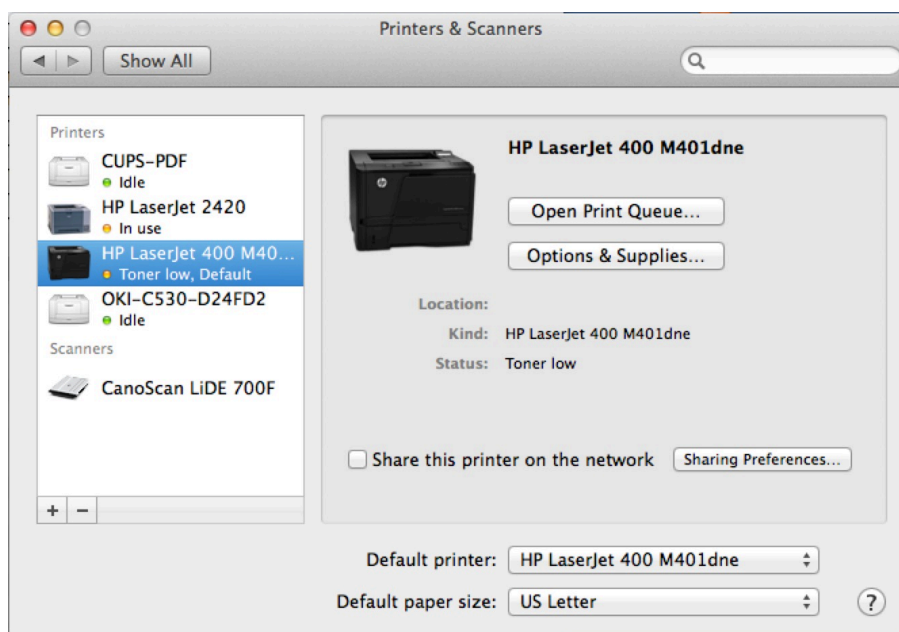


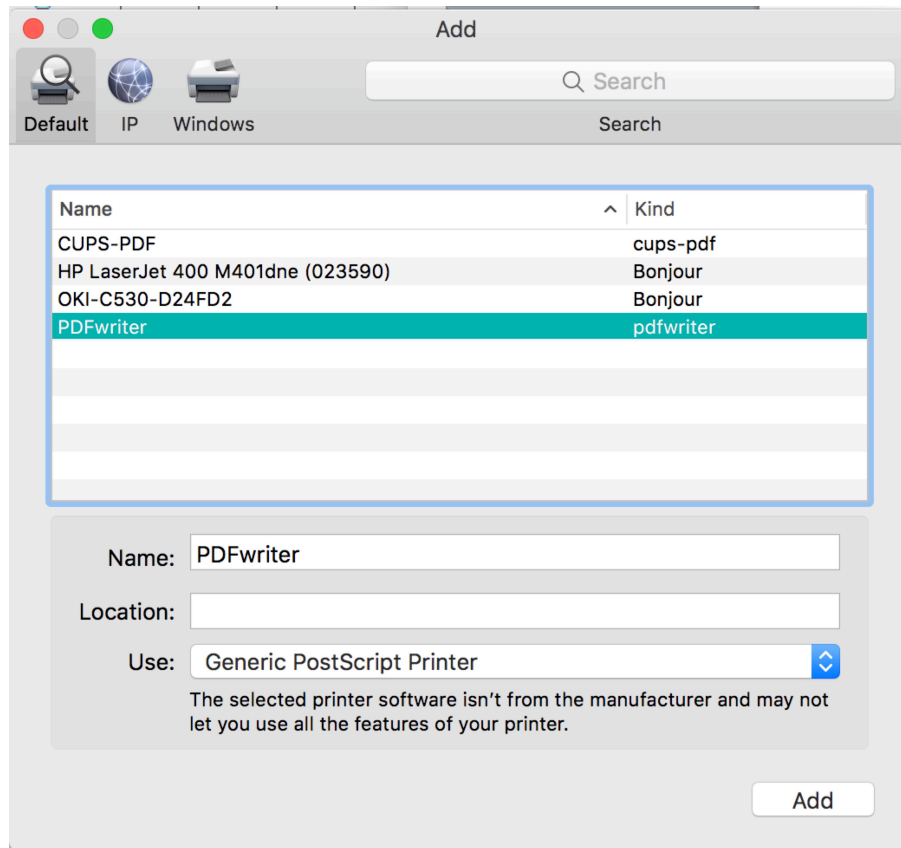
## Printing PDFs with Wine

Printing PDF files from Wine requires the installation of the PDFwriter for Mac software in your Macintosh OS X system. Double-click the PDFwriter\_for\_Mac 1.2.1.dmg installer package that is contained inside the Himalayan Database Wine folder (then double-click on the Lisanet PDFwriter icon and follow the instructions).

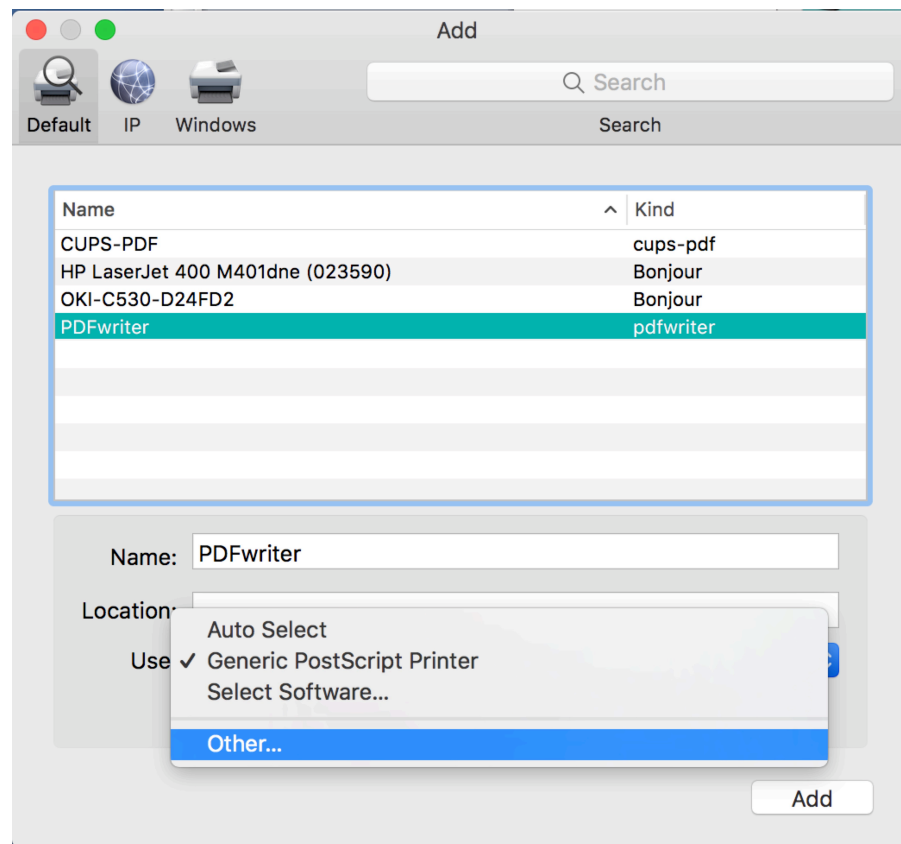


After the installation is completed, you must add the PDFwriter printer to your printer list. Select “System Preferences” from the Apple menu and then select “Printers & Scanners.” Click the “+” box below the printer list and then select “PDFwriter” from the Add window.



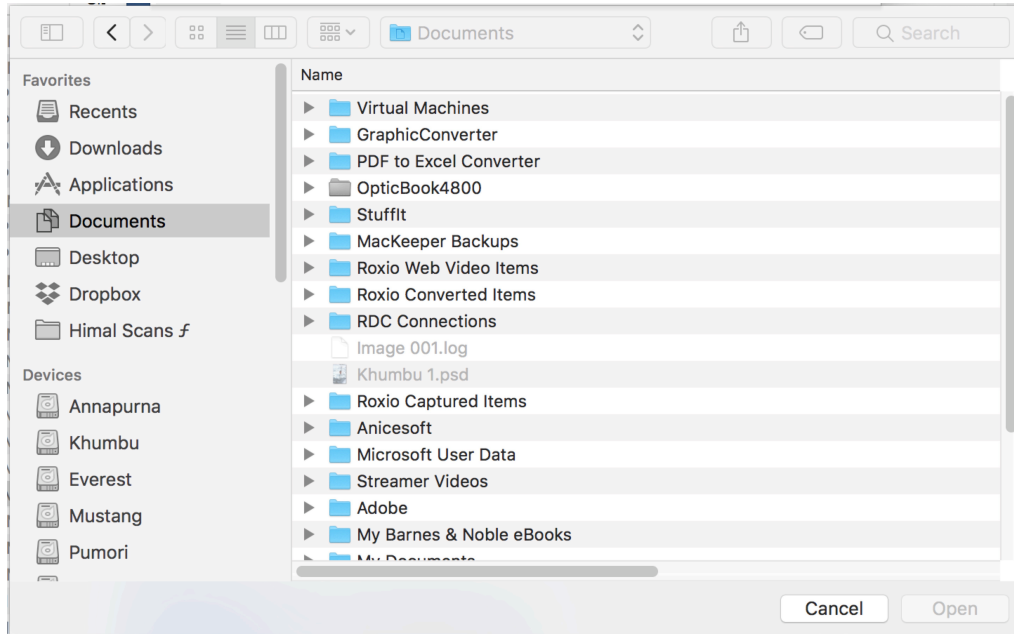


If the Use option only has “Generic Postscript Printer” available instead of “Lisanet PDFwriter” (which often occurs with the newer versions of OSXs), then you will need to manually locate the Lisanet printer driver.





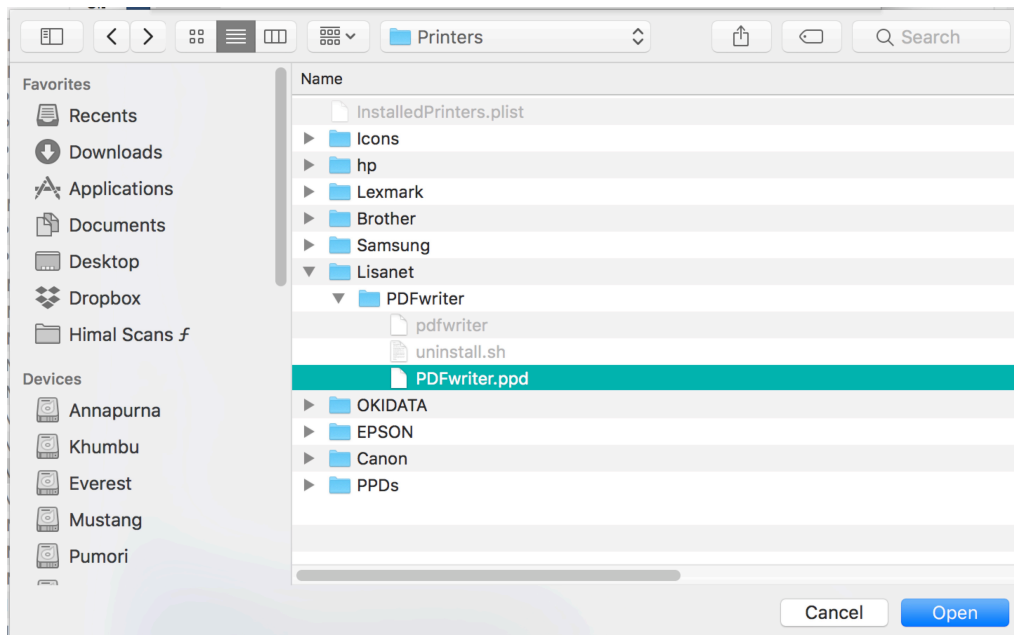
Click on the Use drop-down list and select the “Other” option to bring up the following navigation screen:



Click on the “Documents” (or other folder) option at the top of screen and navigate to the Lisanet printer driver by following the path

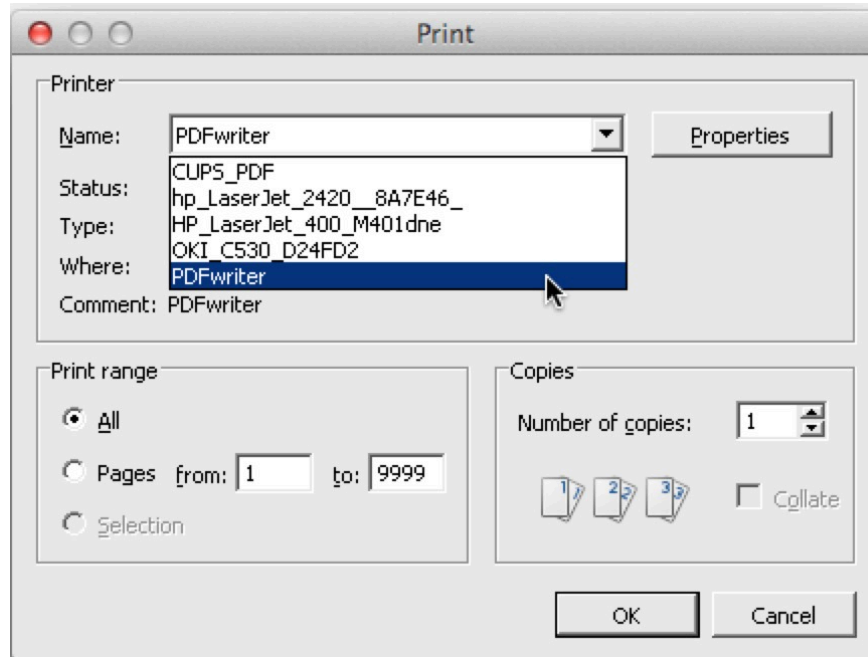
Macintosh HD -> Library -> Printers -> Lisanet ->PDFwriter

and click the “Open” button for the PDFwriter.ppd in the PDFwriter folder.

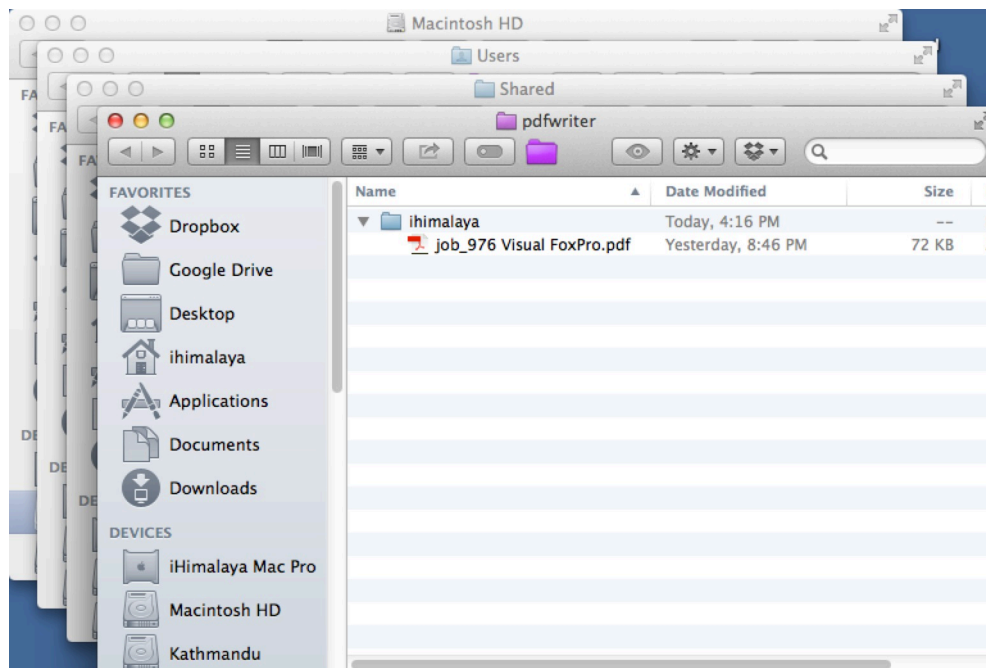


The Add screen should now show Lisanet PDFwriter as the Use option. Click on “Add” to add PDFwriter to your list of available printers.

When printing a PDF file from the Himalayan Database, select “PDFwriter” from the Print dialog.



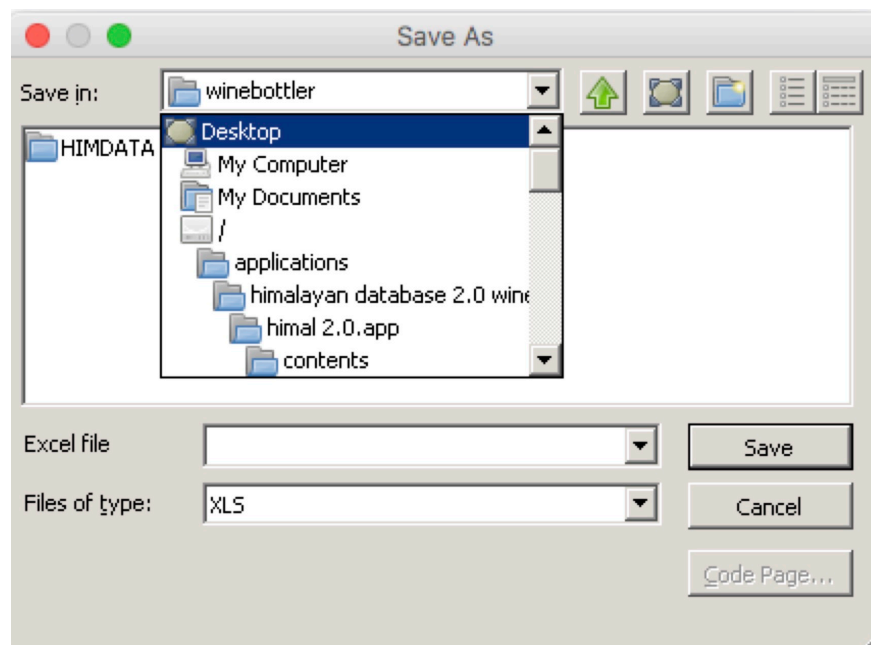
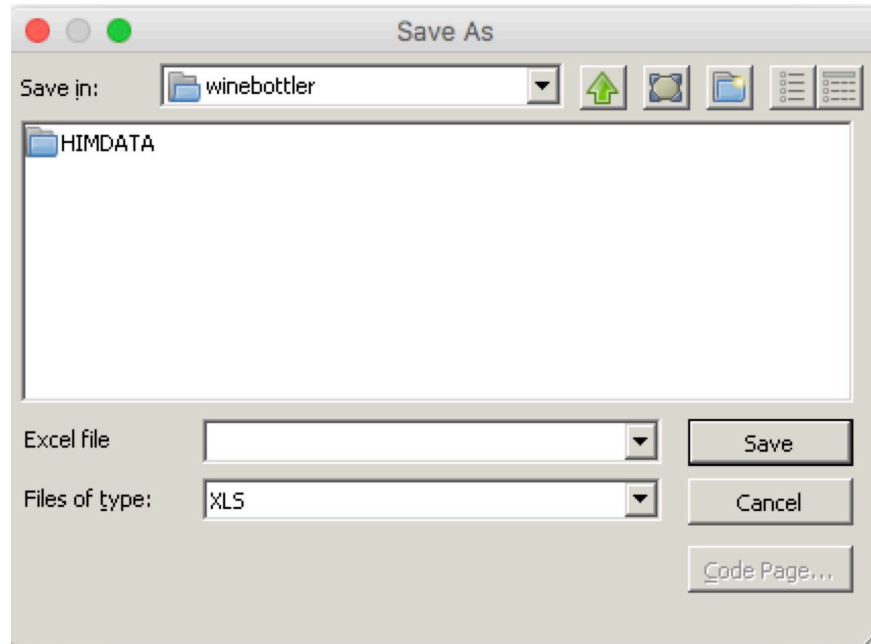
The PDF-output is written to the PDFwriter folder in the Users Shared folder and is given a generic file name such as “job-976-Visual\_FoxPro.pdf.”

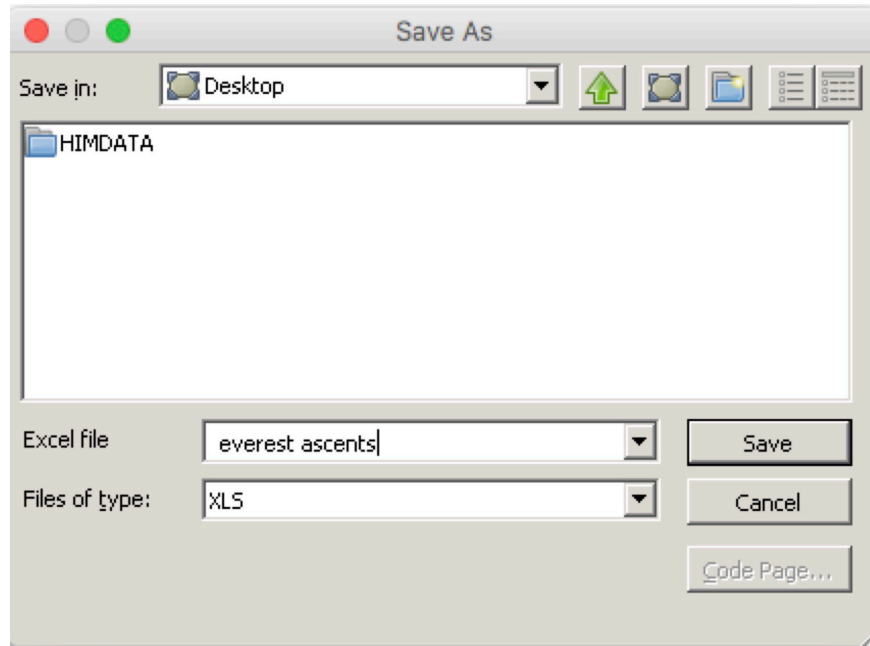


You can rename your PDF-output file to better match its contents. Also you may want to create a desktop alias for the shared PDFwriter folder and rename that alias to “Wine PDFs” or something else to your liking.

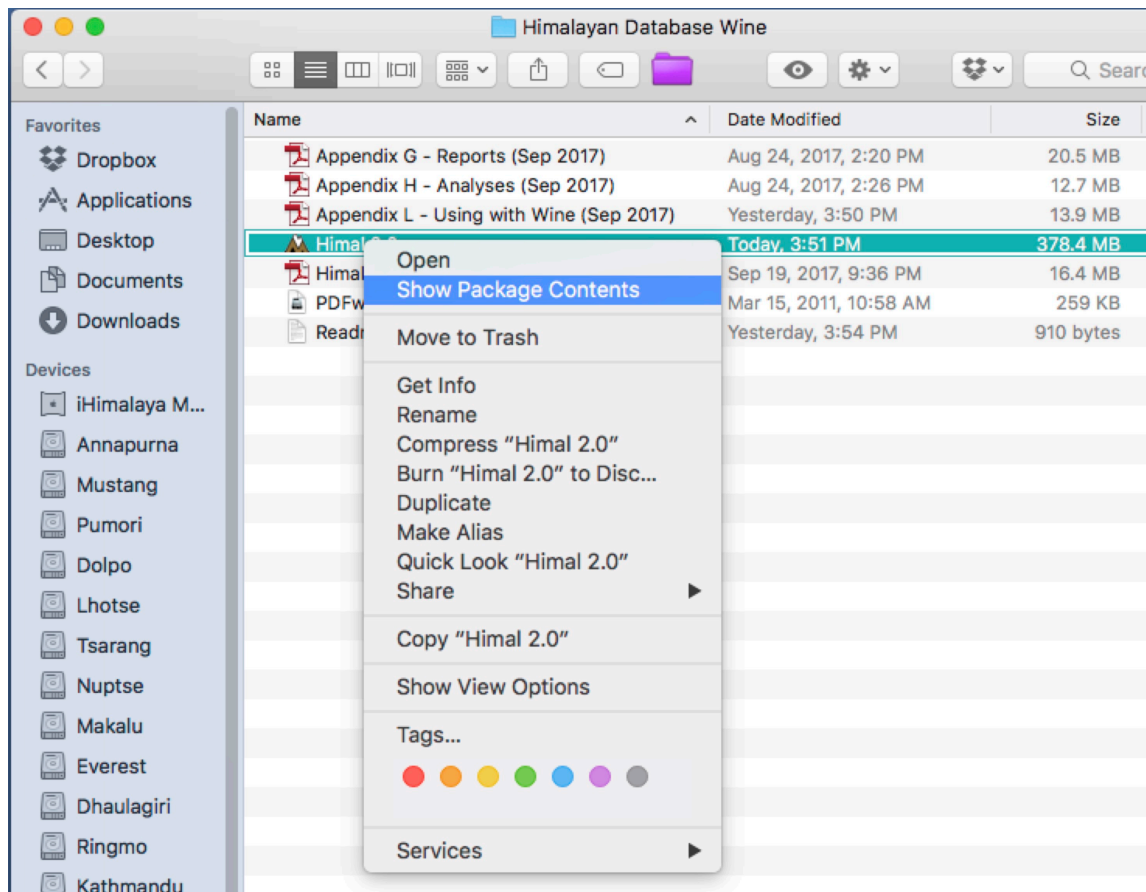
## Saving Excel Files with Wine

When saving Excel files (or any other type of file), a recommended practice is to save them to the Macintosh desktop so that they can be easily accessed. In the “Save As” dialog box, scroll up from “winebottler” and select “desktop” and then click the “Save” button after naming your output file.

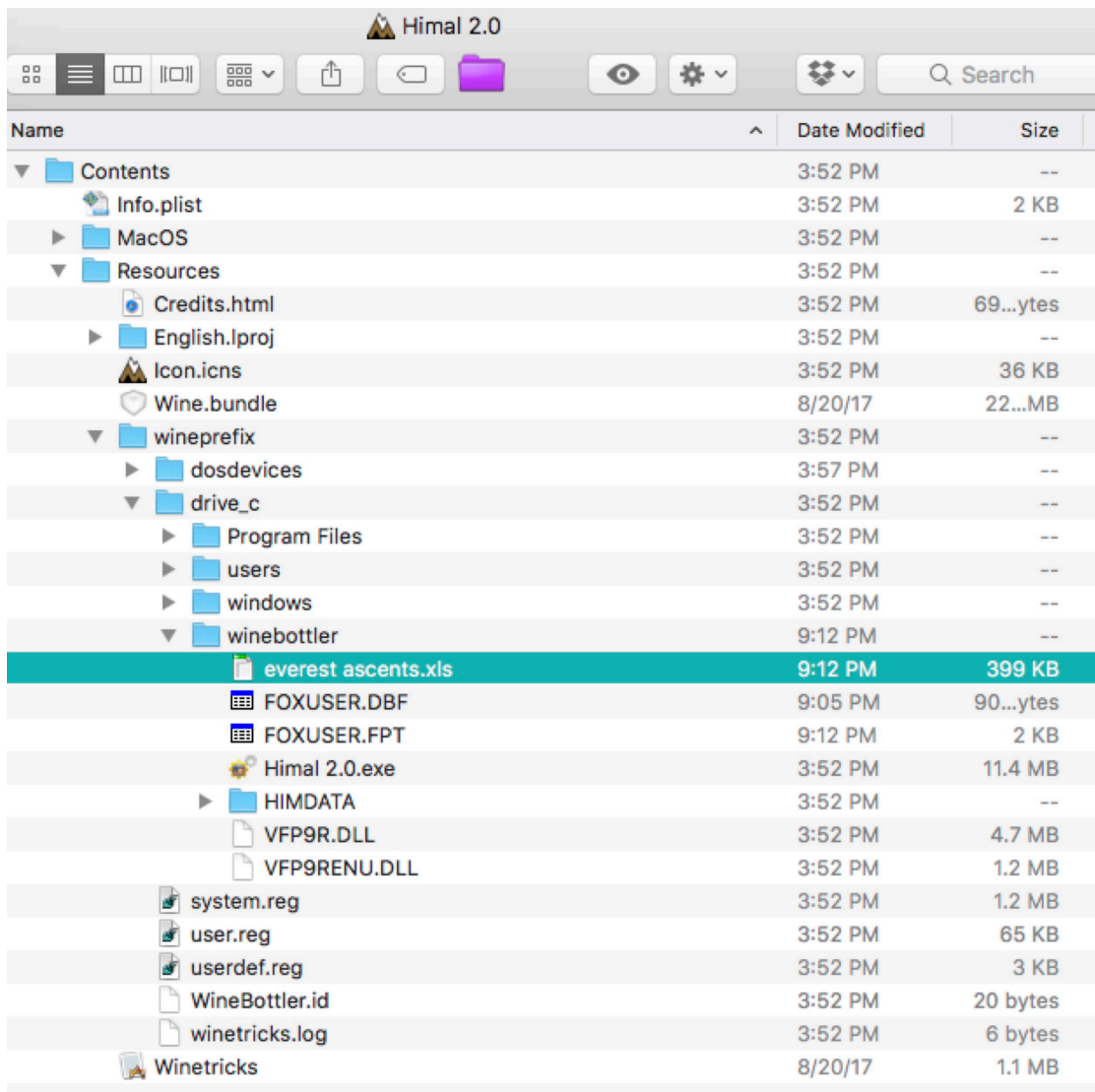




If you mistakenly save your Excel file to “winebottler”, you can locate your file by selecting the Himal application file from the Himalayan Database Wine folder inside of the Applications folder and issuing a Get Info command (Cmd-I) and selecting Show Package Contents:



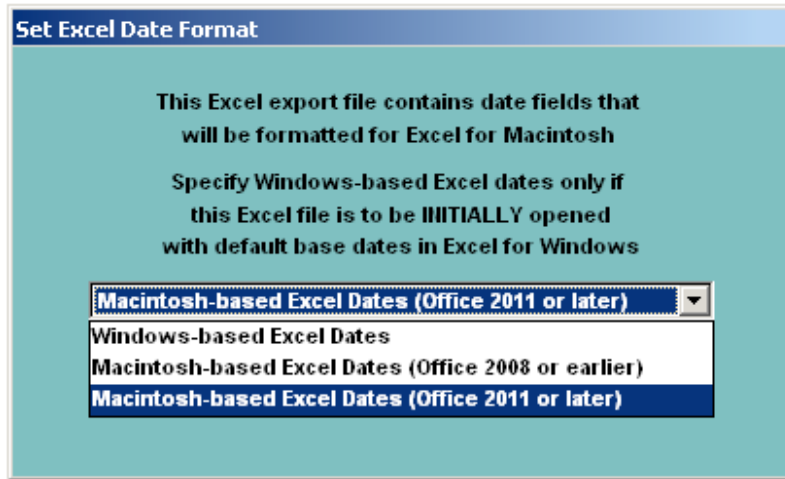
Then navigate down to your output file and drag it to the desktop.



Saving a report to an Excel file poses a special problem when going cross-platform from Windows to Macintosh (or vice-versa) due to the fact that Excel for Windows and Excel for Macintosh use different Julian base dates in date fields. For Windows, the Julian base date of 1 is Dec 30, 1899 while for Macintosh the Julian base date of 1 is January 1, 1904 (the two versions occur because they use differing strategies to account for the fact that 1900 was not a leap year).

Normally, Excel handles this properly if a Windows-export is first opened by Excel for Windows and a Mac-export is first opened by Excel for Macintosh. Once opened, the file is properly marked so that date fields in subsequent openings of the file are properly handled regardless of which version of Excel is used.

But when saving Excel files from a Windows program run under Wine, most likely you will be first opening the file using Excel for Macintosh. Thus the date fields may be incorrect (off by 1462 days) unless adjusted for if you are using default base dates in Microsoft Office 2008 or earlier. The Himalayan Database allows you to compensate for this by selecting “Macintosh-based Excel Dates” in the following dialog window that appears when you save the file.



Further information about Excel base dates and how to compensate for their differences may be found by doing a Google search for “Excel base dates.”

### Updating the Database

Periodic updates to the Himalayan Database will be issued via the Internet at

*www.himalayandatabase.com*

These updates will add records for new expeditions and corrections and additions to records for previous expeditions.

For users running the Himalayan Database with Wine on a Macintosh, the instructions are similar to those running on Windows except that the location where the update files are placed can assist in making the update process easier.

First download the compressed update package from the website *onto the desktop of your Macintosh* and decompress by double-clicking on the update package. The result of the decompression is a folder with a name similar to “Himal Autumn 2019 Updates” containing 14 update files:

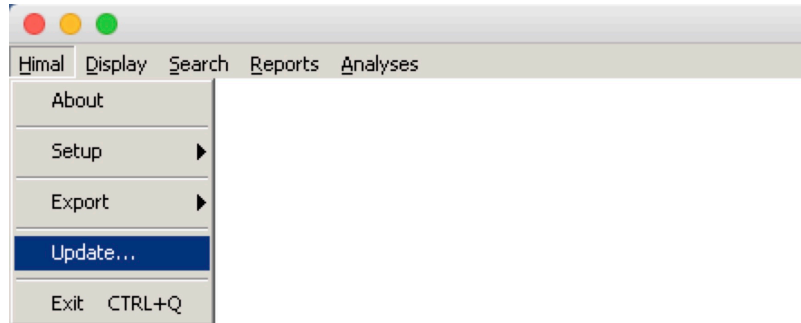
expchgs.dbf	memchgs.fpt	refer.cdx
expchgs.fpt	memchgs.cdx	peaks.dbf
expchgs.cdx	memlog.dbf	peaks.fpt
explog.dbf	refer.dbf	peaks.cdx
memchgs.dbf	refer.fpt	

The files of the form “exp...” and “mem...” contain the changes to be applied to the EXPED and MEMBERS tables. The files of the form “refer...” and “peaks...” are replacement files for the current files in the Himalayan Database.

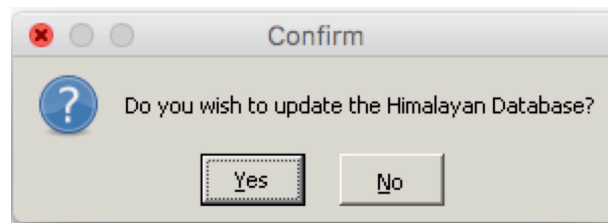
Note: The Autumn-Winter 2018 Update adds four new fields to the MEMBERS database (MSMTNOTE1, MSMTNOTE2, MSMTNOTE3 and DEATHRTE). These new fields are only added if you first download and install the HIMAL 2.2 (or later) version of the database program before applying the update. If you

apply the update with an earlier version of the HIMAL program, the new fields will not be added. See the section “Replacing Components of the Database” for instructions for installing a new version of the HIMAL program.

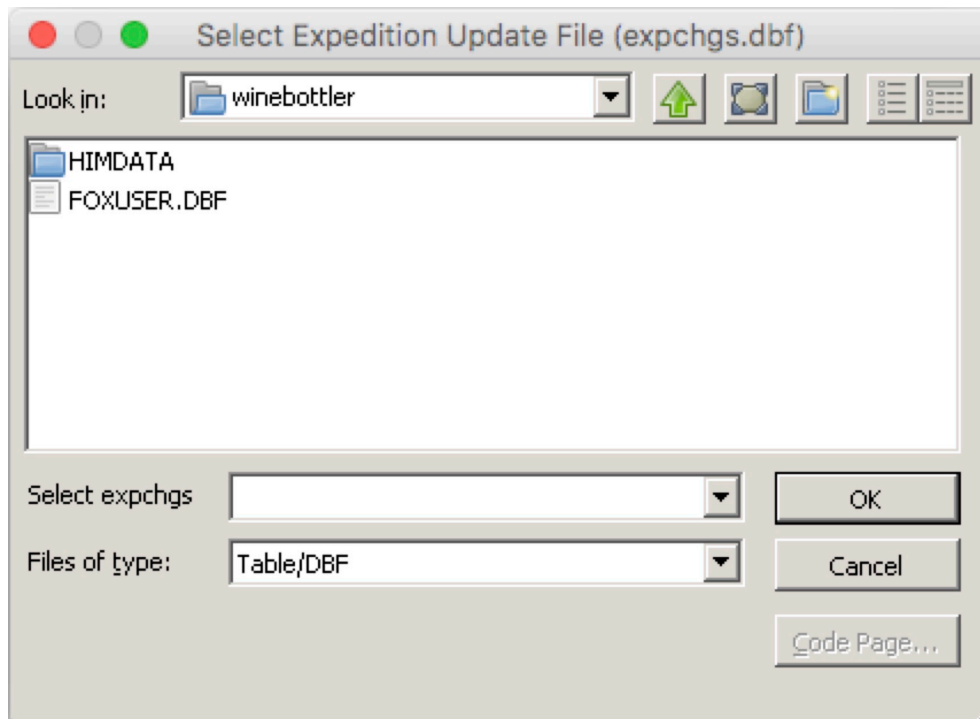
Start the HIMAL program and use the **Update** command in the **File** menu to apply the updates to the Himalayan Database.



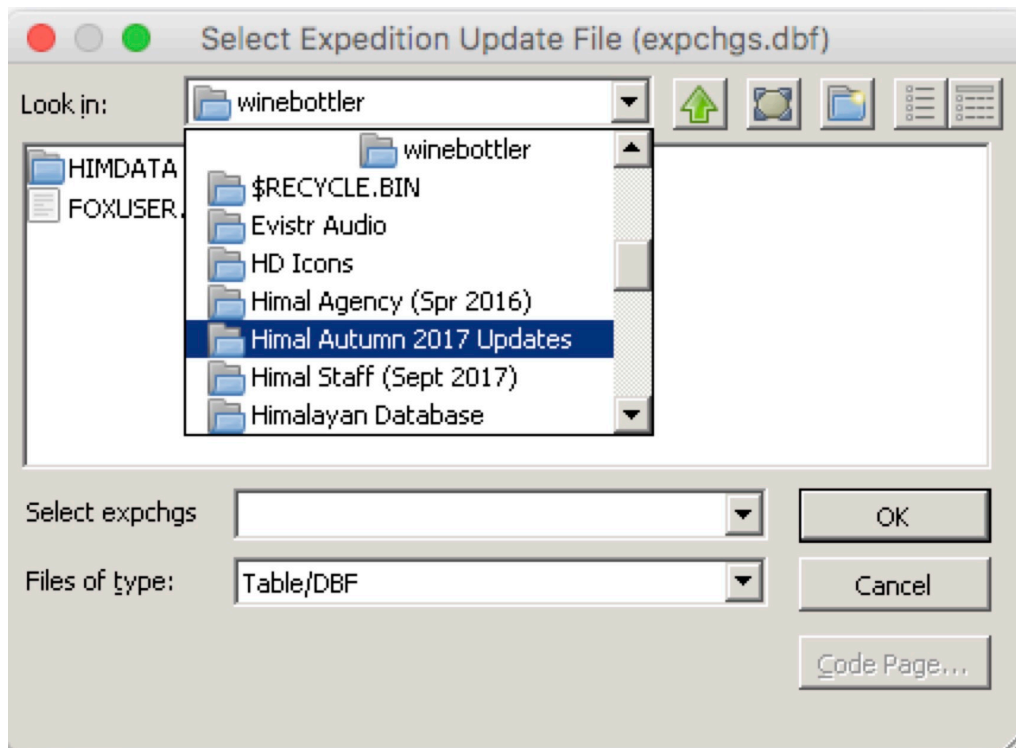
Confirm that you wish to proceed with the update:



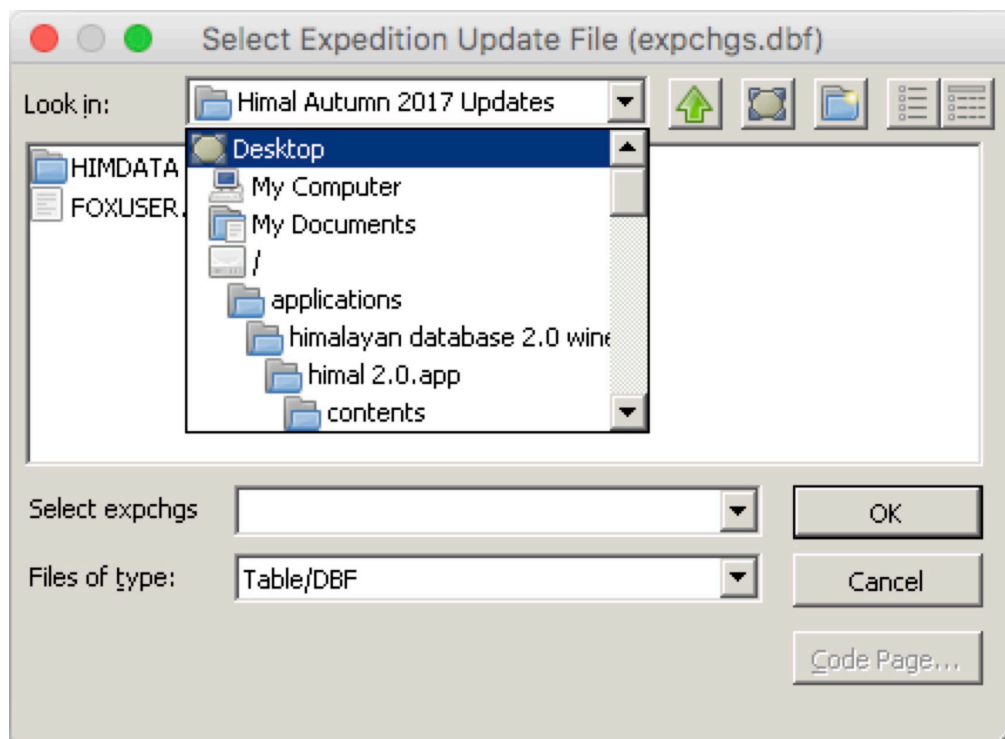
The Select Expedition Update File dialog screen will appear:



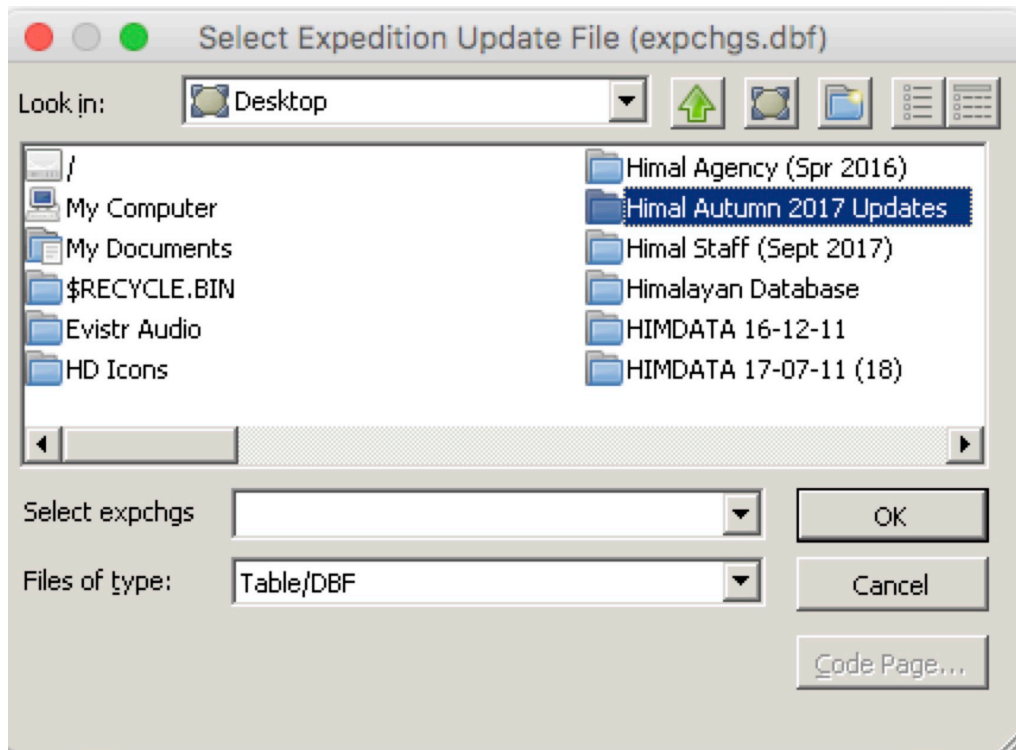
Navigate to the HIMAL Updates folder, which may appear below “winebottler”:



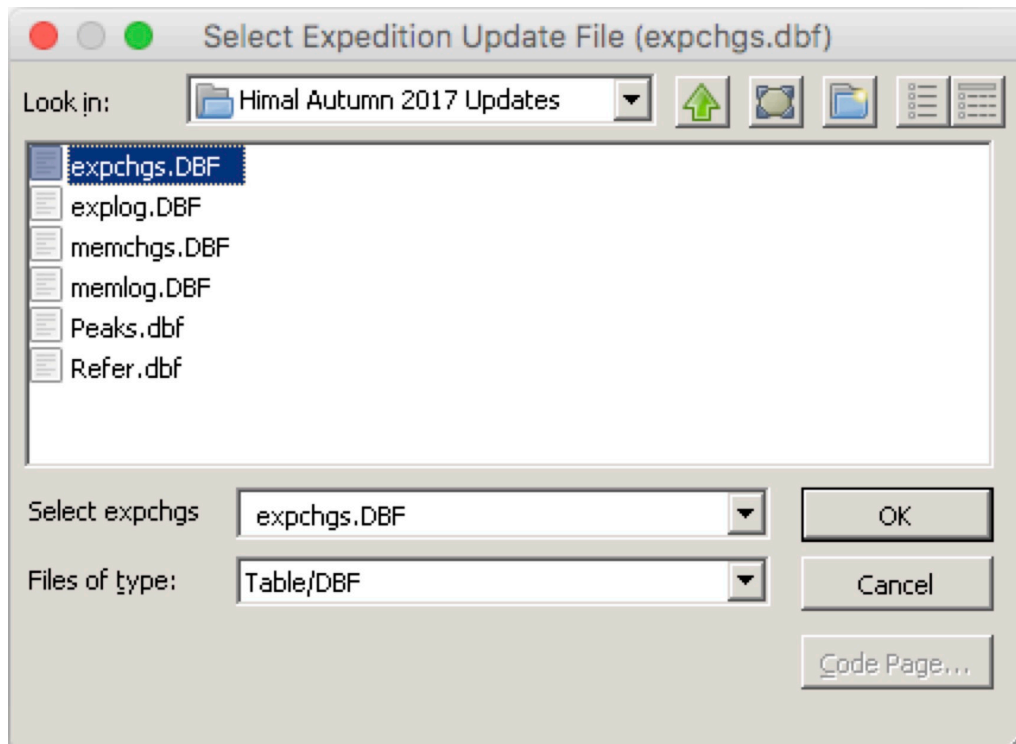
or if it not visible, navigate to and select “desktop” above it and then select the Himal Updates folder:







After you have selected and opened the Himal Update folder, select the first file named “expchgs.dbf” and click the **OK** button in the dialog box.



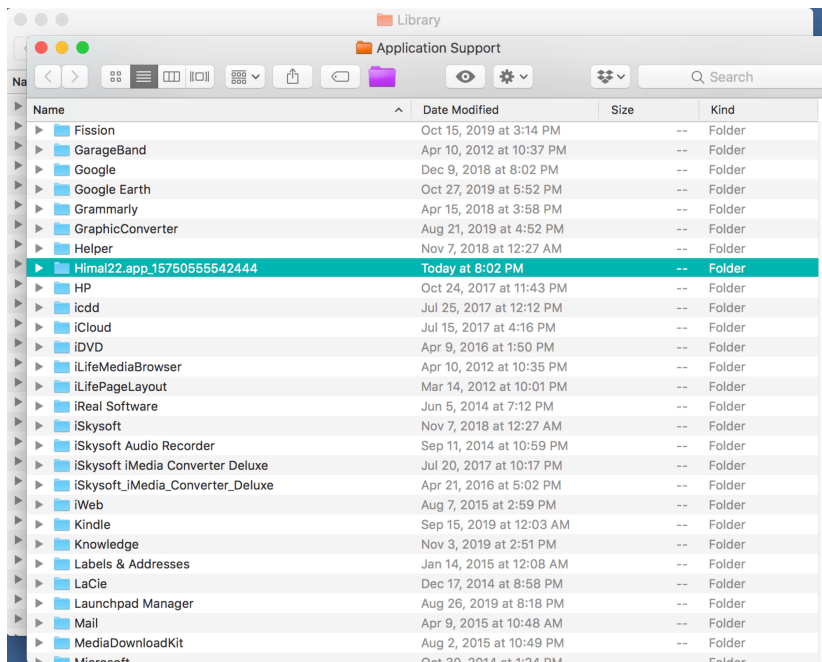
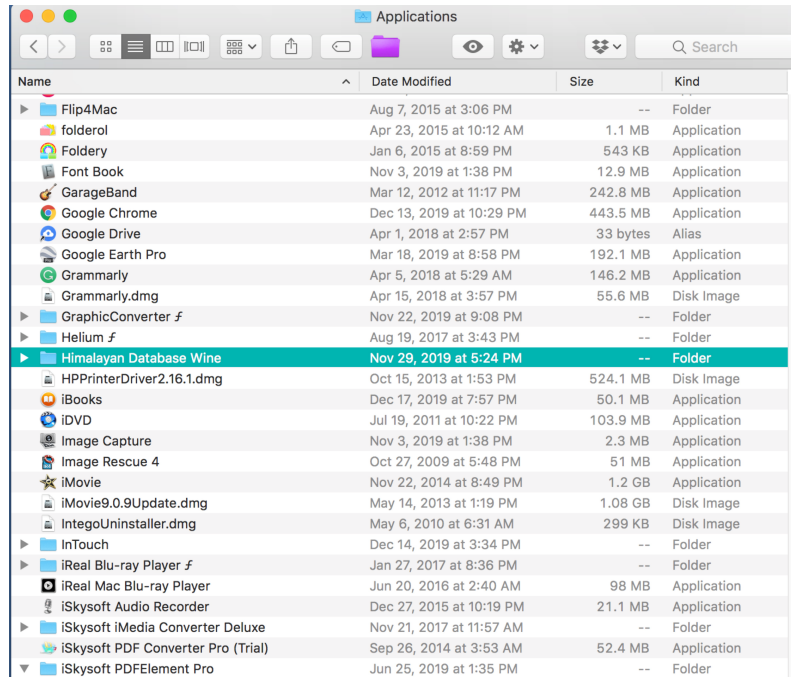
All remaining update files are loaded automatically during the update process.

Confirmation messages are given that each of the four tables—expeditions, members, literature references, and peaks—has been updated.

## Uninstalling the Database

The Himalayan Database may be uninstalled by deleting both the Himalayan Database Wine folder (about 450 mb) in the Applications folder and Himal2x.app\_nnnnnnnn folder (about 150 mb) in the Application Support folder located inside of the Library folder in the Users folder (see illustrations below).

If you are deleting an older version of the Himalayan Database after installing a newer version, make sure to delete the folders with the oldest dates.



The user Library folder may be directly accessed by from the Apple Go menu item by holding down the Option key:

